

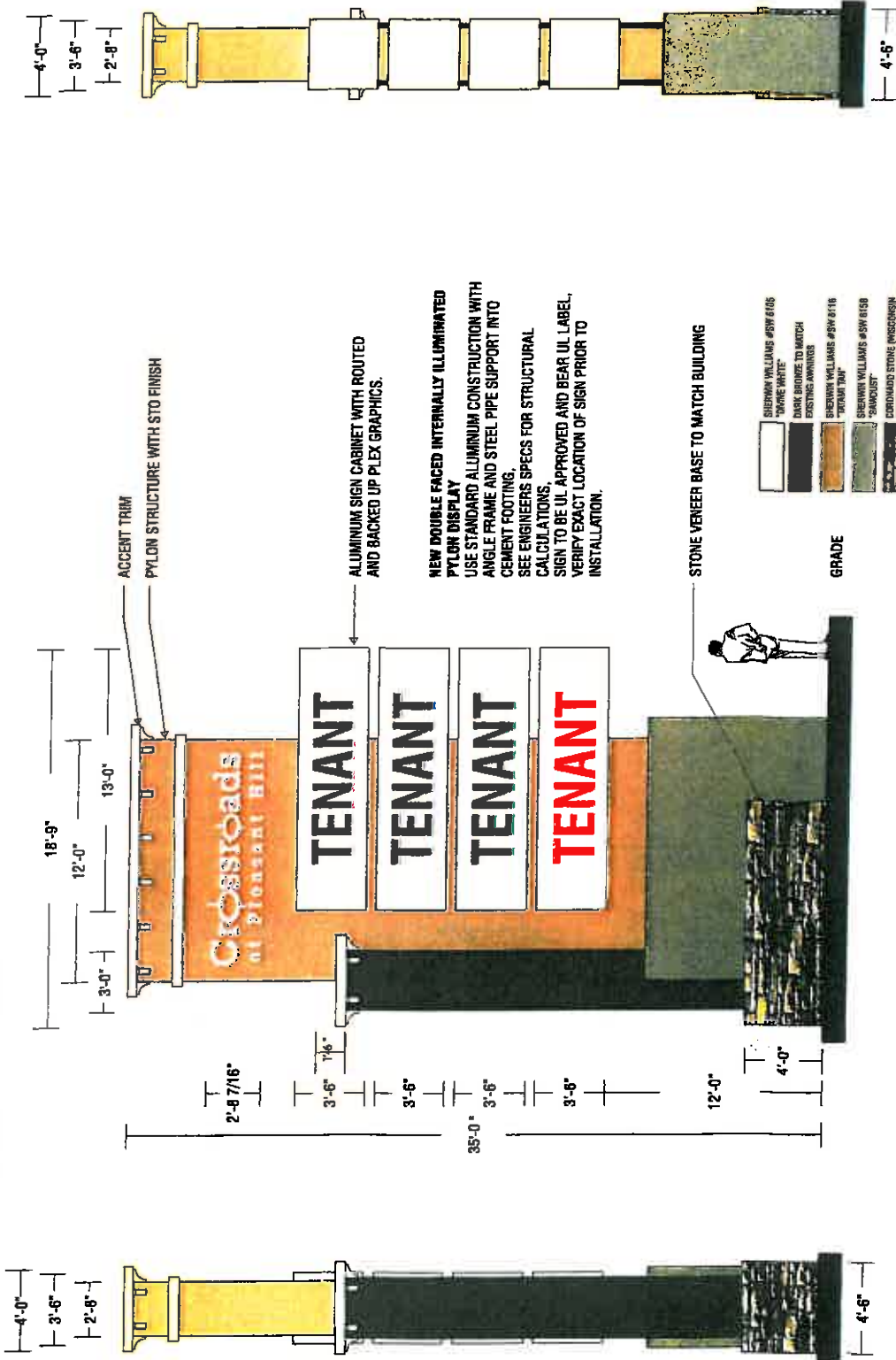
SIGNAGE SITE PLANS

PLEASANT HILL, CALIFORNIA

DATE: APRIL 20, 1998



CROSSROADS at PLEASANT HILL



ACCENT TRIM
PYLON STRUCTURE WITH STO FINISH

ALUMINUM SIGN CABINET WITH ROUTED AND BACKED UP PLEX GRAPHICS.

NEW DOUBLE FACED INTERNALLY ILLUMINATED PYLON DISPLAY
USE STANDARD ALUMINUM CONSTRUCTION WITH ANGLE FRAME AND STEEL PIPE SUPPORT INTO CEMENT FOOTING.
SEE ENGINEERS SPECS FOR STRUCTURAL CALCULATIONS.
SIGN TO BE UL APPROVED AND BEAR UL LABEL, VERIFY EXACT LOCATION OF SIGN PRIOR TO INSTALLATION.

STONE VENEER BASE TO MATCH BUILDING

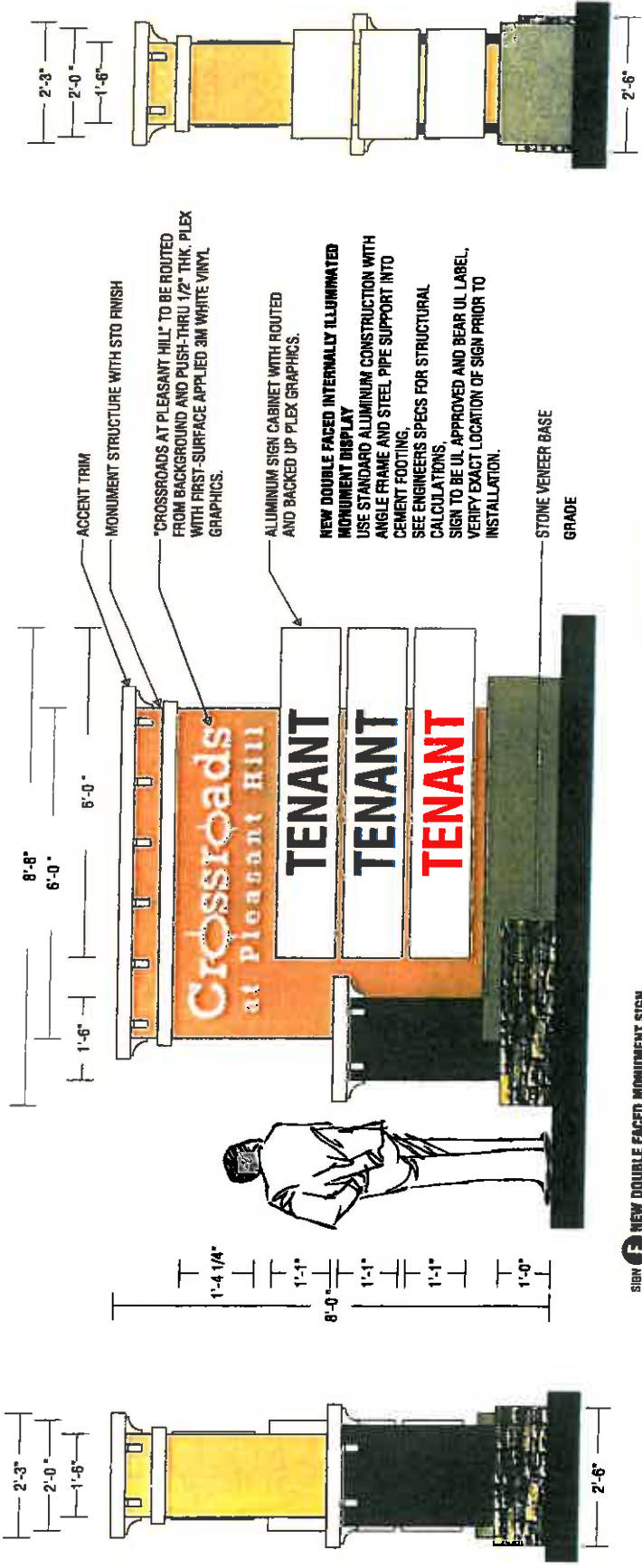
- SHERWIN WILLIAMS #SW 605 "DARK WHITE"
- DARK BRONZE TO MATCH EXISTING AWNINGS
- SHERWIN WILLIAMS #SW 616 "TYPICAL TAN"
- SHERWIN WILLIAMS #SW 619 "CHAUSSET"
- STONE TO MATCH BUILDING ALTERNATE SLIGHT BRUSHED JOINT GREY GROUT

GRADE

SIGN E NEW DOUBLE FACED PYLON SIGN SCALE: 3/16" = 1'-0"

CROSSROADS at PLEASANT HILL

-  SHERWIN WILLIAMS #SW 6105
-  DARK WHITE
-  BLACK
-  EXISTING ARROWS
-  SHERWIN WILLIAMS #SW 6116
-  TUSOCK
-  SHERWIN WILLIAMS #SW 6156
-  SANDBLAST
-  CORDUROY STONE (WISCONSIN)
-  BLOND SHALLOW BRUSHED ALU
-  GREY SICT



ACCENT TRIM
MONUMENT STRUCTURE WITH STD FINISH

"CROSSROADS AT PLEASANT HILL" TO BE ROUTED FROM BACKGROUND AND PUSH-THRU 1/2" THK. PLEX WITH FIRST-SURFACE APPLIED 3M WHITE VINYL GRAPHICS.

ALUMINUM SIGN CABINET WITH ROUTED AND BACKED UP PLEX GRAPHICS.

NEW DOUBLE FACED INTERNALLY ILLUMINATED MONUMENT DISPLAY
USE STANDARD ALUMINUM CONSTRUCTION WITH ANGLE FRAME AND STEEL PIPE SUPPORT INTO CEMENT FOOTING.
SEE ENGINEERS SPECS FOR STRUCTURAL CALCULATIONS.
SIGN TO BE UL APPROVED AND BEAR UL LABEL, VERIFY EXACT LOCATION OF SIGN PRIOR TO INSTALLATION.

STONE VENEER BASE
GRADE

SCALE: 1/2" = 1'-0"

F NEW DOUBLE FACED MONUMENT SIGN